

# Accessories

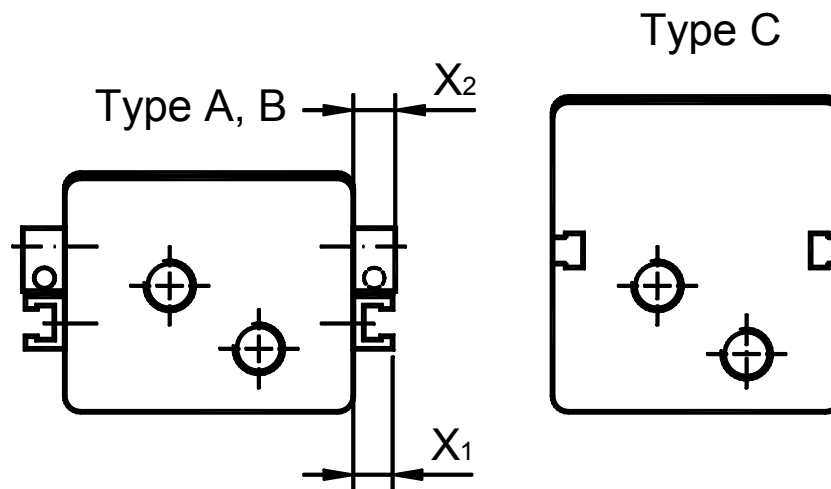
Type B / BEW / BB / BBZ / B-D2R

TOSS<sup>®</sup>

## Electrical/electronic limit switch

The electrical limit switch is used on modules with integrated standard profile groove or attached rails.

It can be mounted on both sides and is provided with a yellow LED and a suppressor circuit (replaceable by an electronic limit switch).

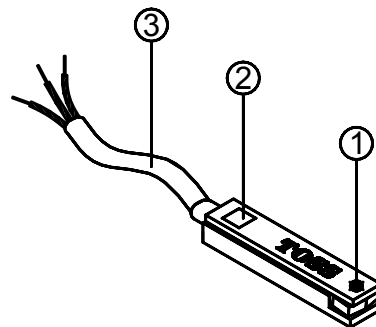


### Technical data:

Operating voltage range:	12 ... 30 V DC
Switching capacity/current:	Max. permissible 2 W (Ohmic load) / 100 mA
Temperature range:	-20°C ... +60°C
Contact type:	make contact element
Type of prot. - DIN 40050:	IP 65 / 67
Medium:	magnetic field and electric current
Distance - X <sub>1</sub> :	7.5 mm
Distance - X <sub>2</sub> :	8.0 mm

Art.-No. 38510022

- ① Hexagon socket set screws
- ② Display switch state (yellow LED)
- ③ Connecting cable



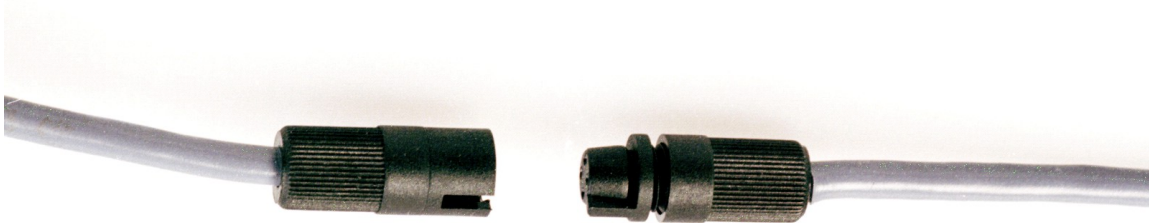
All data based on test conducted by TOSS.

## Accessories

Type B / BEW / BB / BBZ / B-D2R

### Plug-in-couplers:

For all models



### Compressed air connections:

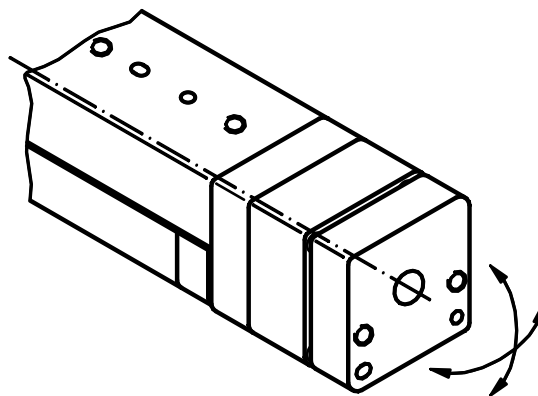
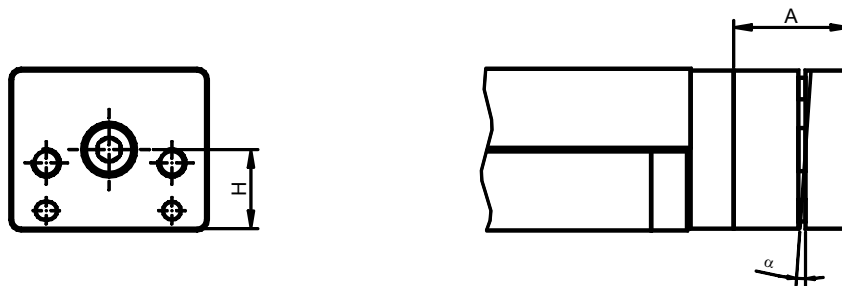
Straight or rotating screw connection,  
also with non-return valve.



## Accessories

Type B / BEW / BB / BBZ / B-D2R

compensating module  
for pneumatic-actuators type B  
∅ 20 up to ∅ 40 mm



Typ	A [mm]	$\alpha$ [°]	H [mm]
AM 20 B	32	4	19,25
AM 25 B	32	4	22
AM 32 B	36	6	24,25
AM 40 B	36	6	31,75

Mounting holes correspond to the respective pneumatic-actuator.  
If possible dimension H should be considered as the point of application of force.