

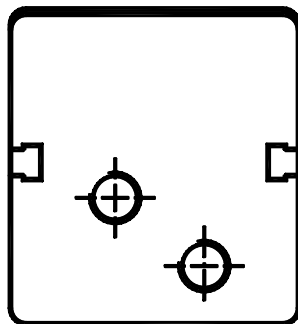
Type C

Electrical/electronic limit switch

The electrical limit switch is used on modules with integrated standard profile groove or attached rails.

It can be mounted on both sides and is provided with a yellow LED and a suppressor circuit (replaceable by an electronic limit switch).

Type C

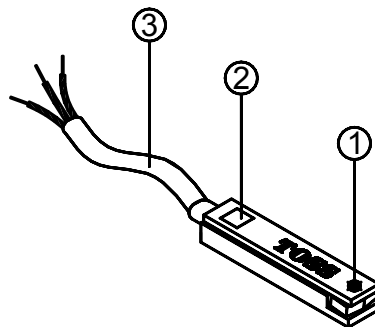


Technical data:

| | |
|-----------------------------|--|
| Operating voltage range: | 12 ... 30 V DC |
| Switching capacity/current: | Max. permissible 2 W (Ohmic load) / 100 mA |
| Temperature range: | -20°C ... +60°C |
| Contact type: | make contact element |
| Type of prot. - DIN 40050: | IP 65 / 67 |
| Medium: | magnetic field and electric current |
| Distance - X ₁ : | 7.5 mm |
| Distance - X ₂ : | 8.0 mm |

Art.-No. 38510022

- ① Hexagon socket set screws
- ② Display switch state (yellow LED)
- ③ Connecting cable

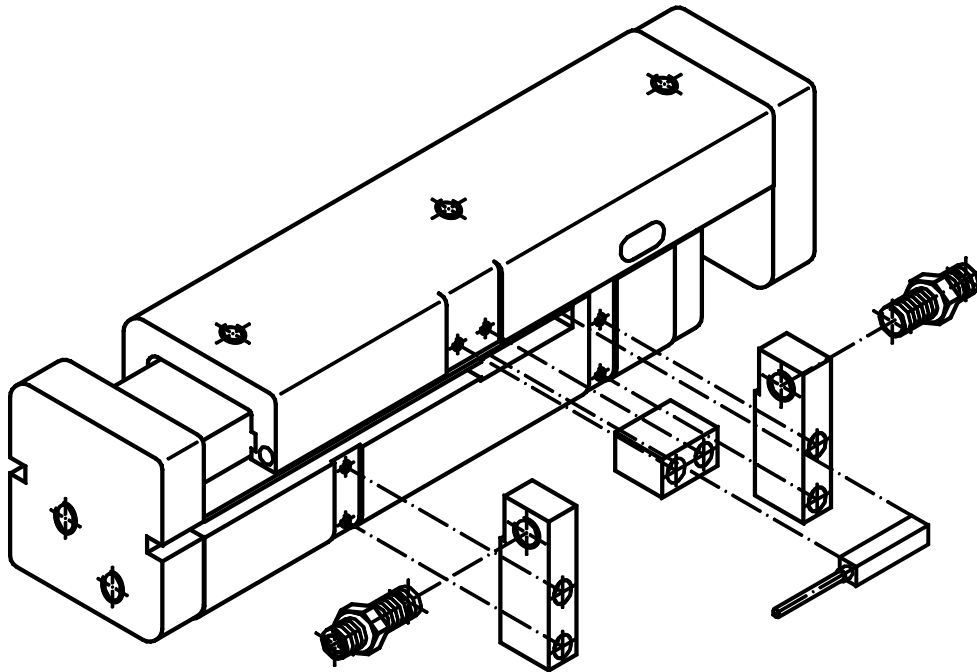


Accessories

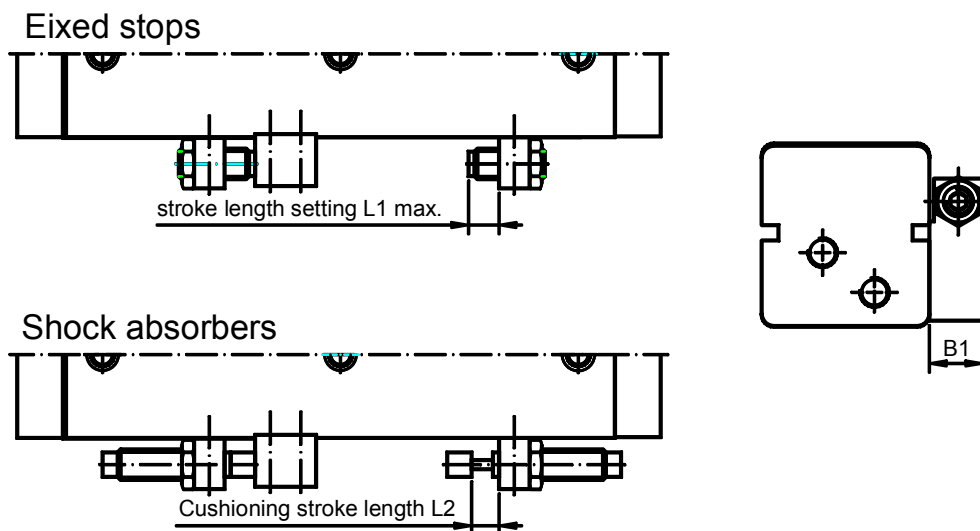
Type C

TOSS[®]

Pneumatic cylinder type C (\varnothing 10 to \varnothing 40 mm, stroke 25 to 200 mm)



The pneumatic cylinders of type C can be supplied with external and adjustable fixed stops or with small hydraulic shock absorbers. The mounting is possible on both sides (when small shock absorbers are mounted only front air connections can be supplied).



| Piston- \varnothing [mm] | 10 | 16 | 20 | 25 | 32 | 40 |
|----------------------------|------|------|------|------|----|----|
| L1 [mm] | 5 | 5 | 5 | 5 | 5 | 5 |
| L2 [mm] | 6,6 | 10 | 10 | 10 | 16 | 16 |
| B1 [mm] | 17,5 | 17,5 | 17,5 | 17,5 | 21 | 21 |

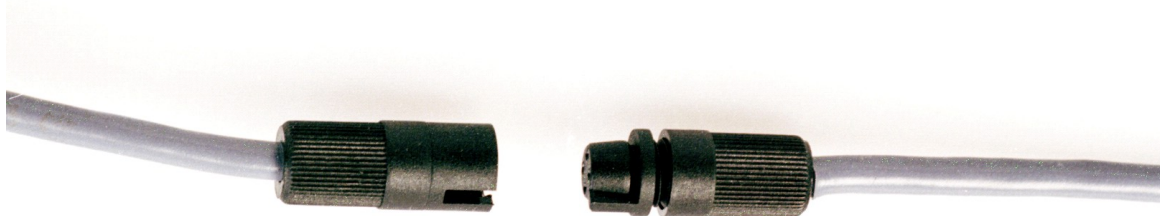
Accessories

Type C

TOSS[®]

Plug-in-couplers:

For all models



Compressed air connections:

Straight or rotating screw connection,
also with non-return valve.

